



PARK RESIDENCES
CADDE



Those who love being in the center of life, fashion,
art, the sun and the sky, living exclusively,
are at

PARKRESIDENCES

CADDE

in the heart of

Istanbul's most esteemed center;
the Bagdat Street

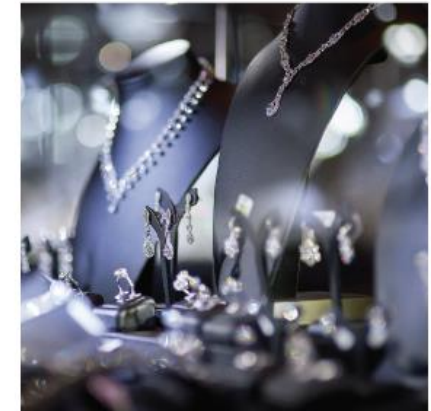
in a life designed with impeccable aesthetics,
surrounded by the matchless views
of the historical peninsula
where azure blue and emerald green meet.

IN THE CENTER OF LIFE IN THE HEART OF THE CITY

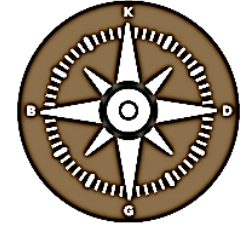
Istanbul is an enchanted fairytale of the spell-binding harmony of the old and the new, the traditional and the modern, the west and the east... One of the most exclusive residential areas of the world's most beautiful city Istanbul with its flavor, texture and energy; the Bagdat Street...

A privileged address primed for you to move in tomorrow with Birlesik Land Estate reassurance at the heart of Istanbul's most dynamic hub of life with its rich history and socio-cultural mosaic, peerless nature and marinas.

Neighbor to world-class brands, fanciest restaurants, cafés and art galleries; integrated with the expansive green nature of the Ozgurluk Park, a mere 3 minutes' walk away from Istanbul's choice beach Caddebostan and Kalamis yacht marina; an emerald green life becomes one with matchless architecture and flawless details.



PARK RESIDENCES
C A D D E



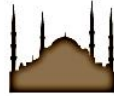
AN UNEQUALLED INVESTMENT

With its magnificent location at the center of all transportation alternatives and its green and blue, an investment you should not miss; a future you can start living tomorrow...



ATATÜRK
AIRPORT
20 KM

SULTAN
AHMET
MOSQUE



Kadıköy 3 km

Taksim 15 km

FSM Bridge 17 km

Bosphorus Bridge 12 km

Sabiha Gökçen
Airport 20 km

15 Minutes to the
historical peninsula
via Marmaray



SABIHA GÖKÇEN
HAVALİMANI
20 KM



LIVING THE MOST EXCLUSIVE
IN THE CENTER OF ISTANBUL



A PERFECT LIFE, FLAWLESS ARCHITECTURE, LIVING SPACES DESIGNED WITH UTMOST ATTENTION

Thorough comfort primed for living, designed with intricately sophisticated details and equipped with the latest technology...

1+1

2+1

3+1

4+1

7 different types of spacious and cozy residences ranging from 115 m² to 350 m² that caters the need of different life styles; each designed with heightened taste for you and your family.



PARK RESIDENCES
C A D D E

BEST
OF ALL
JOYFUL
MOMENTS
WITH THOSE
YOU LOVE
THE MOST



Designed as 4+1 apartments on an area of 350 m², the flats are fitted with an infrastructure that can provide all the needs of your family with a peerless view and spacious living spaces...



1 LOBBY+ENT. LOBBY	15,10 m ²	9 LOBBY	5,60 m ²
2 LIVING ROOM	62,10 m ²	10 TV ROOM	30,65 m ²
3 M. BEDROOM	24,87 m ²	11 KITCHEN	18,90 m ²
4 M. BATHROOM	5,22 m ²	12 WC	2,41 m ²
5 DRESSING	10,60 m ²	13 UTILITY ROOM	1,93 m ²
6 BEDROOM 1	16,87 m ²	14 BALCONY	28 m ²
7 C. BATHROOM	5,65 m ²		
8 BEDROOM 2	14,62 m ²		

Carpet Area 242,6 m²

* Net Area 282 m²

** Gross Saleable Area 350 m²

* Net area measurements indicated include the wall thickness.
** Gross Saleable area is calculated including wall thickness, common areas (elevator halls, floor corridors, fire escape halls and spaces) and terraces.



Living spaces created with special care for those
you love the most.



22nd floor / 4+1 / Bedroom

YOUR
QUALITY TIME
YOUR BEST
STORIES



With living spaces varying between 102 m² and 117 m², the 1+1 flats are designed for roomy and peaceful lives with grand glass fronts and sunlight filled rooms.



- ❶ ENT. LOBBY 6,45 m²
- ❷ LIVING ROOM 28,98 m²
- ❸ BEDROOM 16,61 m²
- ❹ BATHROOM 4,48 m²
- ❺ KITCHEN 6,50 m²
- ❻ WC 3,73 m²

Carpet Area 66,75 m²

* Net Area 75,51 m²

** Gross Saleable Area 117 m²

* Net area measurements indicated include the wall thickness.
 ** Gross Saleable area is calculated including wall thickness, common areas (elevator halls, floor corridors, fire escape halls and spaces) and terraces.

Designed by Hakan Helvacioğlu.



YOUR
LOVELIEST
DREAMS

YOUR
BIGGEST JOYS





3+1 residences that blend unequalled comfort with the breathtaking view of Istanbul for you to share the most special moments with your family are equipped with impeccable details on an area of 223 m².



1 ENT. LOBBY	19,30 m ²	9 WC	2,26 m ²	Carpet Area	147,13 m ²
2 LIVING ROOM	39,87 m ²	10 UTILITY ROOM	2,12 m ²	* Net Area	174,16 m ²
3 M. BEDROOM	19,86 m ²			** Gross Saleable Area	223 m ²
4 M. BATHROOM	6,65 m ²				
5 BEDROOM 1	18,12 m ²				
6 C. BATHROOM	4,30 m ²				
7 BEDROOM 2	15,50 m ²				
8 KITCHEN	19,15 m ²				

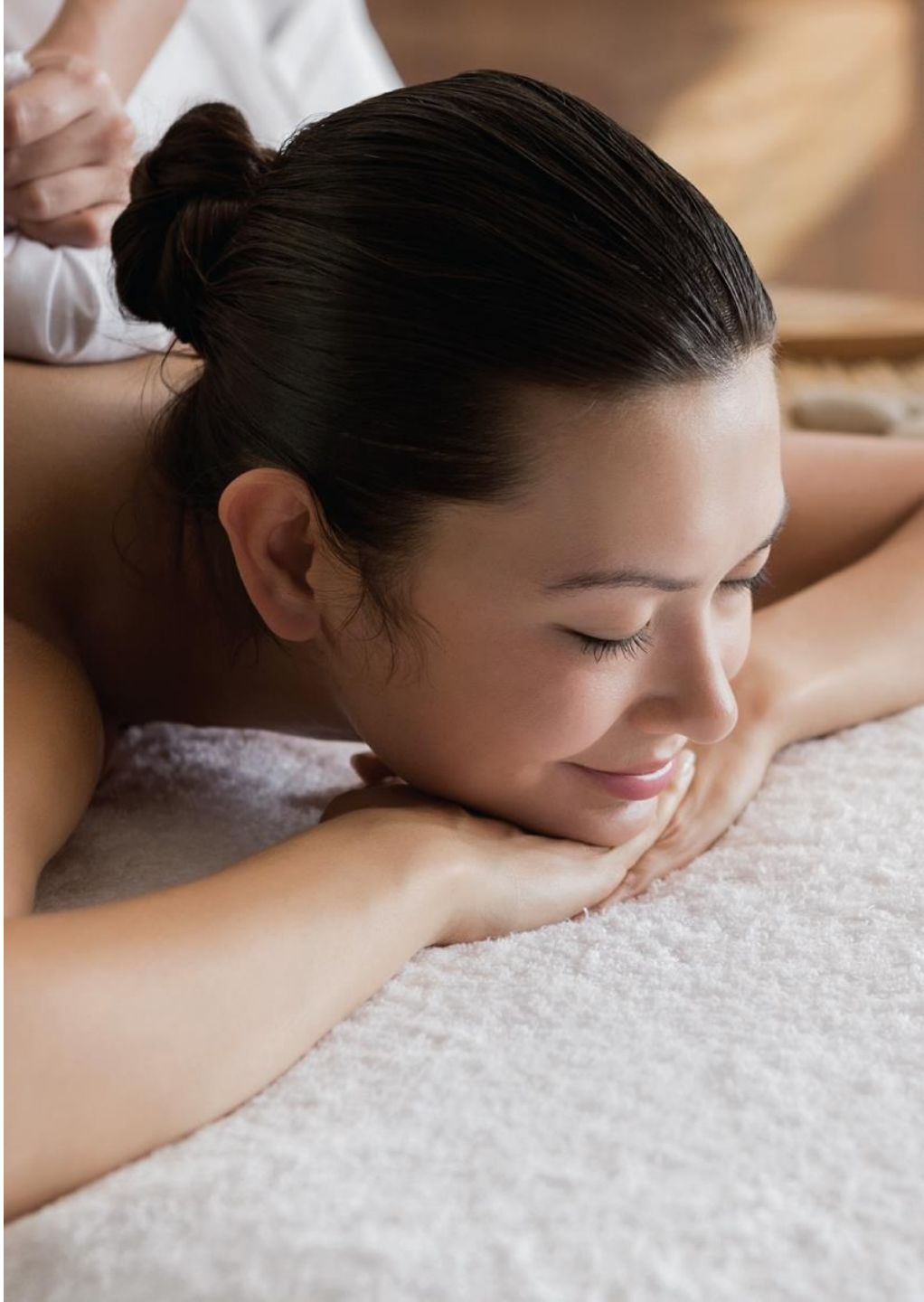
* Net area measurements indicated include the wall thickness.
 ** Gross Saleable area is calculated including wall thickness, common areas (elevator halls, floor corridors, fire escape halls and spaces) and terraces.

An aerial photograph of a modern residential development. Two prominent curved glass skyscrapers frame a central courtyard. The courtyard features a large rectangular swimming pool with lane markings, a smaller square pool, and a winding water feature with a small island. The area is lush with green lawns, various trees, and landscaped garden beds. In the foreground, there is a paved area with several large white triangular shade sails. The overall scene is bright and sunny, suggesting a high-quality, green living environment.

YOUR
WARMEST
FRIENDSHIPS
YOUR
BLUE-GREEN
FREEDOM



Situated in the center of lush green landscapes, sunbathing terraces, open air swimming pool and children's pool offer excellent living areas where you can experience your personal joys with your loved ones.



In the peaceful world of Park Residences Cadde, you will strip the stress and exhaustion of the day, relax and feel like you have been reborn.

Spa Center

Hamam

Sauna

Jacuzzi

Steam

Room

YOUR MOST
ENTERTAINING
ADVENTURES
YOUR MOST
COLORFUL
DISCOVERIES



Indoor game and education areas, lush parks and a magnificent swimming pool... The freedom to have fun with joy and safety and expand the horizon of their imagination will be a matchless gift for your children; the most precious treasure you have.

A PERFECT LIFE WITH EVERY DETAIL CAREFULLY CONSIDERED THAT TURNS LIVING INTO AN EXCLUSIVE EXPERIENCE BY THE QUALITY AND SAFETY OF BIRLESİK LAND ESTATE.

Within walking distance of world-renowned brands and the finest restaurants, cafés and art galleries of Istanbul..

Flats that define impeccable luxury with views of the Marmara Sea, the Islands and the historical peninsula..

Flat varying from 1+1 to 4+1 to 350 m²..

Floor to ceiling high glass fronts with full command of the view in all apartments..

Ponds, parks and activity & recreation areas surrounded by lush landscaping..

Social facilities with the breathtaking sea view..

Private guest houses..

A fitness center built with highest standards and a spacious and refreshing setting and supplied with the best of advanced technology equipment.

SPA area with a hamam, steam rooms and saunas..

Lobbies designed with the comfort of luxury hotels..

Concierge services ready to attend to all your needs..

Modern, latest technology high ceiling, first class closed car park with a 1000 vehicle capacity..

24 hour security..

Children's recreational areas..

Lounge areas made for your special events..

Chauffeur room..

Prayer room..

Year round social & cultural events..



PARK RESIDENCES
C A D D E



BİRLEŞİK

Göztepe Mah. Mehmet Seyda Sok. No. 2/1
34730 Kadıköy/İstanbul

0216 504 1880

parkresidencscadde.com